

The precinct information represented here is draft and needs to be approved by the Kane County Illinois County Board

Political Township: Geneva and Batavia
 Geographic Township: Township 39 North, Range 8 East of the Third Principal Meridian

Map Grid Description
 88°36'30" W - Measures of Latitude and Longitude
 925,000 - Measures of distance based on the State Plane system

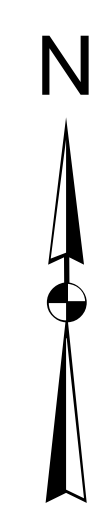
Kane County GIS-Technologies

GIS-Technologies
 719 Batavia Ave
 Geneva, IL 60134

Voice: (630) 208-8655
 Fax: (630) 208-8659
 gistech@co.kane.il.us

Map Projection: Transverse Mercator
 State Plane - Illinois East, NAD 1983
 01/08/2022 njk

- Legend**
- Survey Monuments
 - Unincorporated Village
 - ▭ Parcels
 - ▭ Precincts
 - ▭ Township
 - ▭ Municipalities
 - ▭ Water
 - ▭ Creeks
 - ▭ Centerlines
 - ▭ Railroads

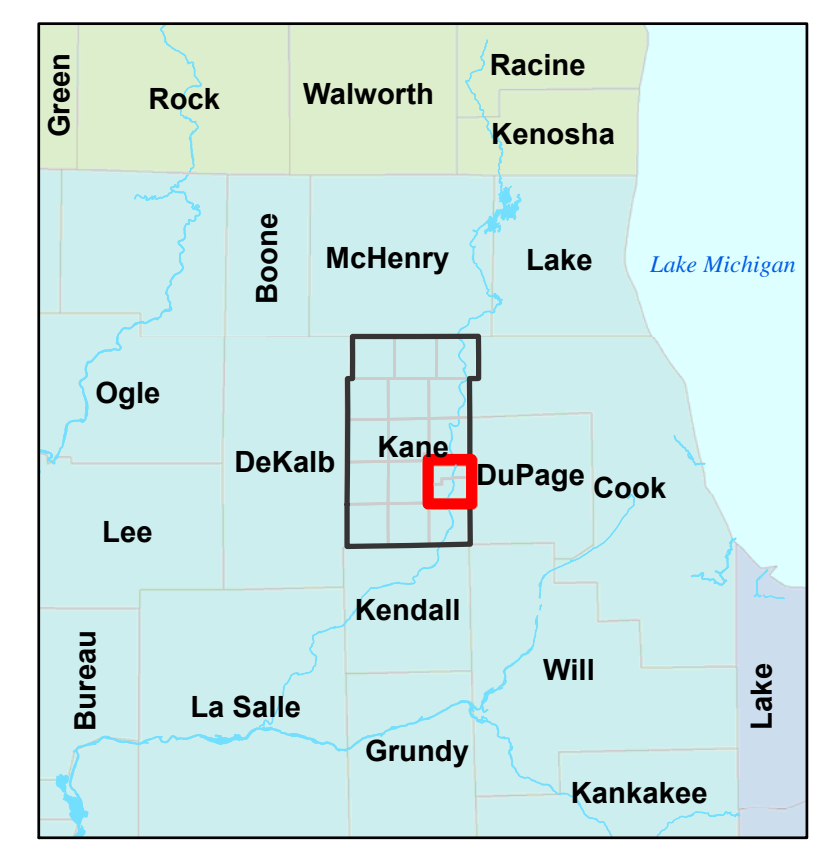
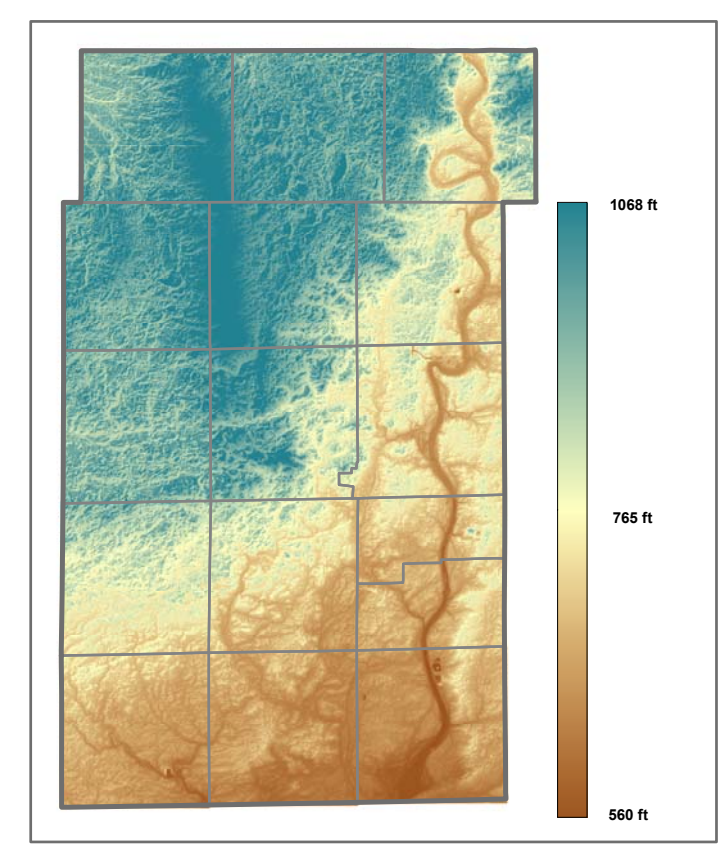


DRAFT

Geneva & Batavia Townships

Kane County, Illinois

1 inch = 1,200 feet



This map does not represent a survey. No accuracy is assumed for the data delineated herein, either expressed or implied by Kane County or its employees. This map is compiled from official records, including plats, surveys, recorded deeds, and contracts, and only contains information required for local government purposes. See the recorded documents for more detailed legal information.