

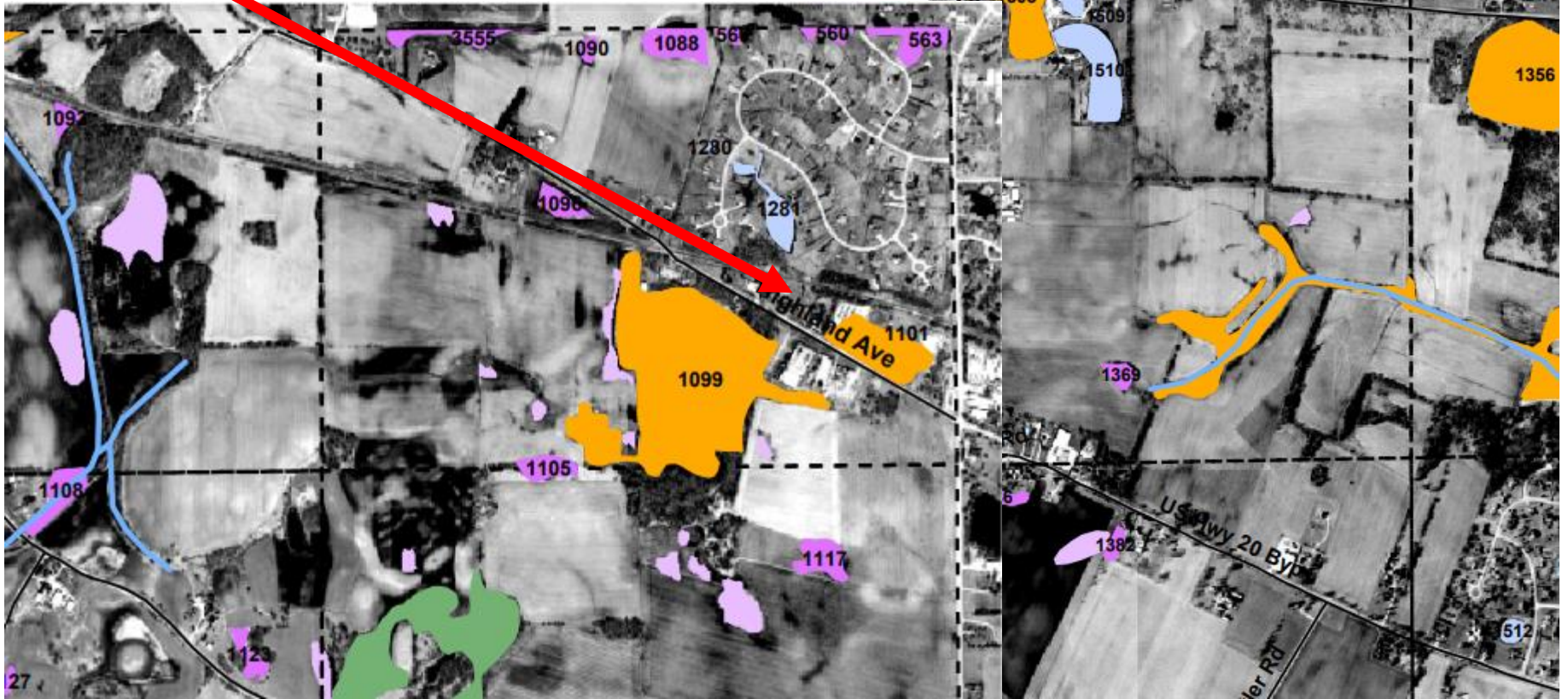
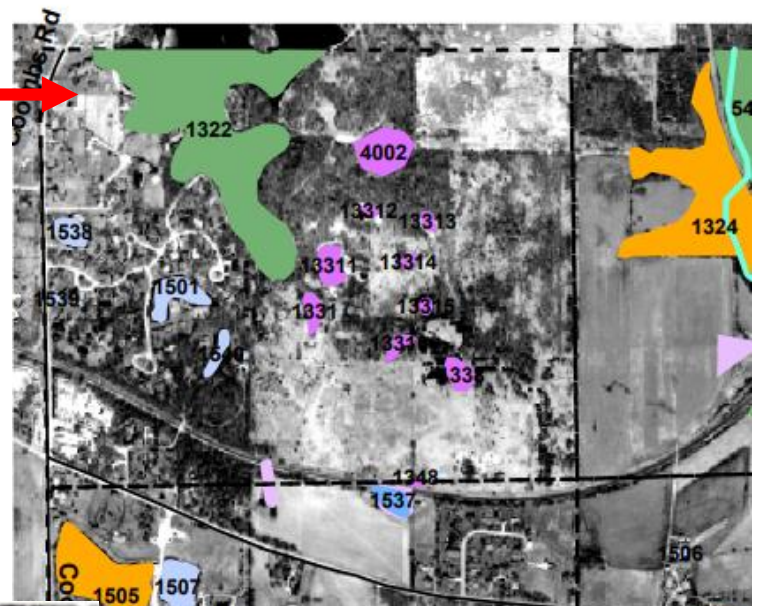
Petitioners property large share  
"Highly Functional Wetlands"  
per the Army Corps of Engineers


Adjacent "Highly Functional  
Wetlands" and "High Habitat  
Value" located couple hundred  
feet away in Highland woods  
Subdivision.





Paul Wolf Wetlands  
"High Habitat Value"  
Close vicinity to  
Petitioner's property

Petitioners property's  
Wetlands




 Map Sections


 Expressways


 Major Roads

## Rivers, Streams, and Ditches


### Biological Stream Characterization


 High Quality


 C,D, and E Quality

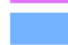
 Unrated


### Wetland Type


 High Habitat Value

 High Functional Value

 Wetland


 Natural Open Water and Fox River

 Artificial Ponds

 ADID Farmed Wetlands

 Islands

 Fens

 NRCS Farmed Wetlands

This map was produced under the Advanced Identification (ADID) Program of the U.S. Environmental Protection Agency and the U.S. Army Corps of Engineers. Descriptions of the wetland inventory methodology and the wetland and stream designation criteria are available in the Kane County ADID Study Methodology.

The wetland boundaries shown are not jurisdictional delineations.

Note: Although the aerial photography displayed on this map was taken in 2001, the ADID data was based on aerial photography taken in 1996-1998 and then updated with photography from 2000. For this reason some features present on the 2001 photography may not be reflected in the ADID data.

Date of Map Creation: August 30, 2004  
L. Barghusen, Senior Environmental Analyst

Watersheds and Non-point  
Source Programs Branch  
Region 5  
U.S. Environmental  
Protection Agency



Regulatory Branch  
U.S. Army Corps  
of Engineers



**US Army Corps  
of Engineers**