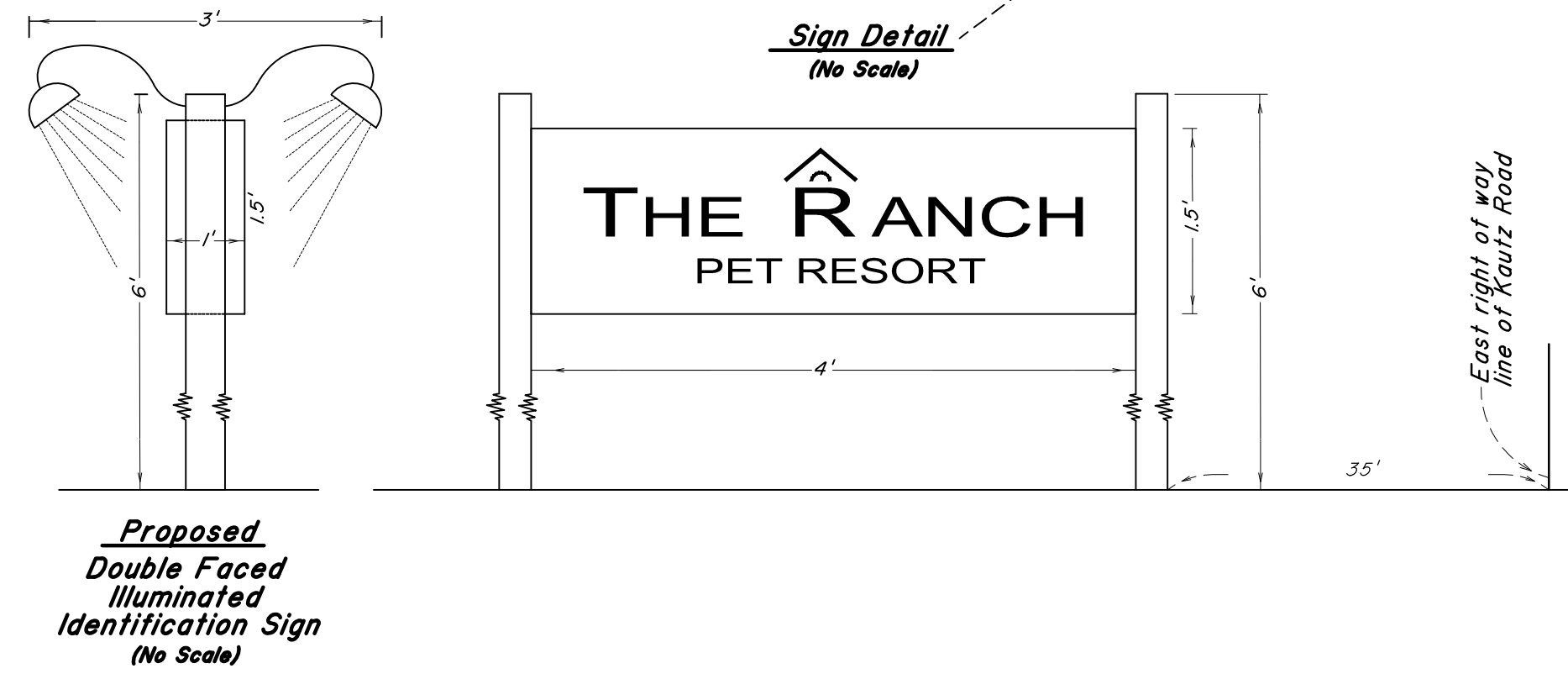
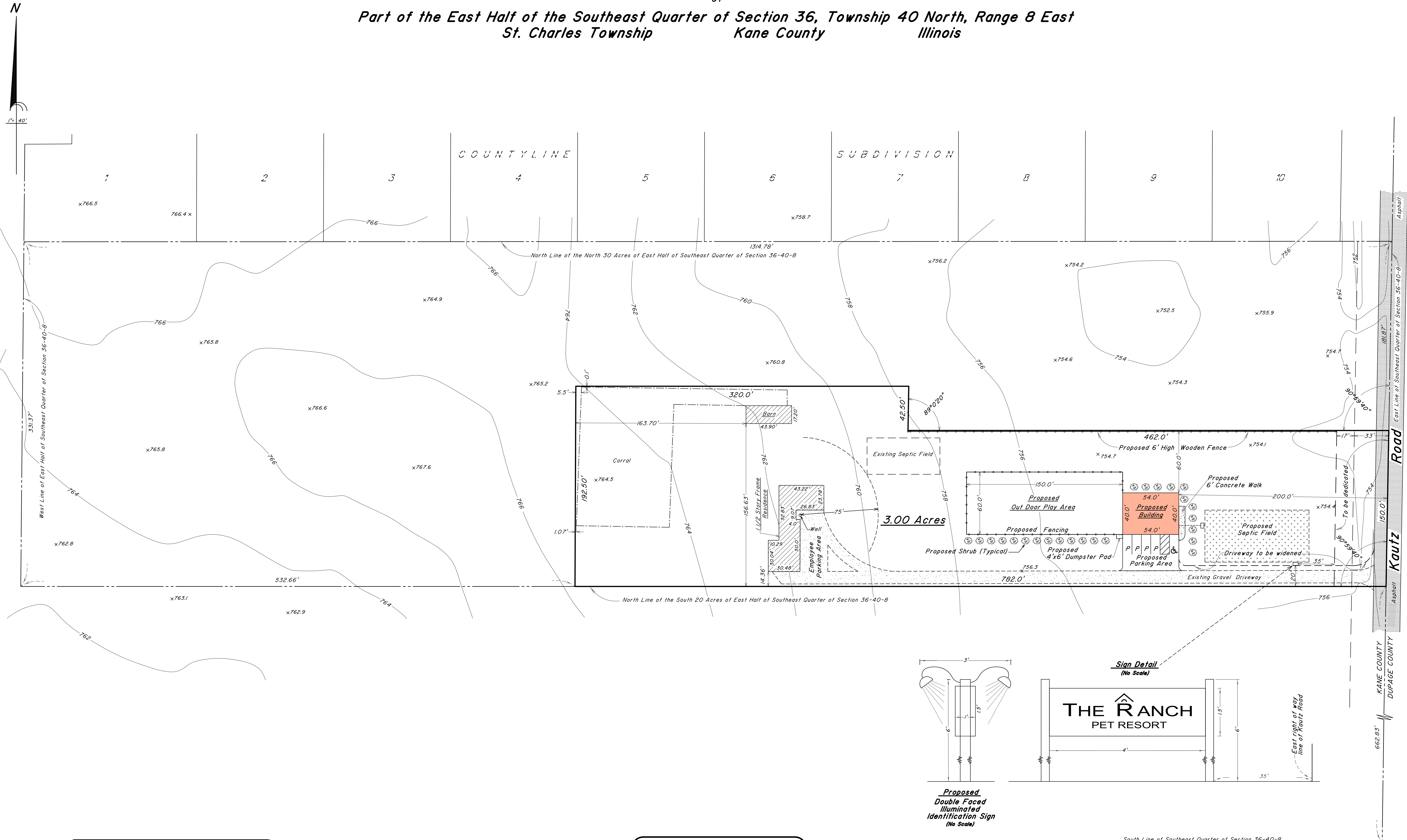


Site Development Plan
of
Part of the East Half of the Southeast Quarter of Section 36, Township 40 North, Range 8 East
St. Charles Township
Kane County
Illinois



© COPYRIGHT 2017-2019, ASM CONSULTANTS, INC. ALL RIGHTS RESERVED.

PREPARED BY:

ASM
ASM Consultants, Inc.
16 E Wilson St, Batavia IL 60510
Tel (630) 879-0200 Fax (630) 454-3774
advanced@advct.com
Professional Design Firm #184-006014 expires 4/30/2021

PREPARED FOR:

Brian & Tracy McLean, Owners
c/o Development Properties, Inc.
44 White Oak Circle
St. Charles, IL 60174
12/17/2019