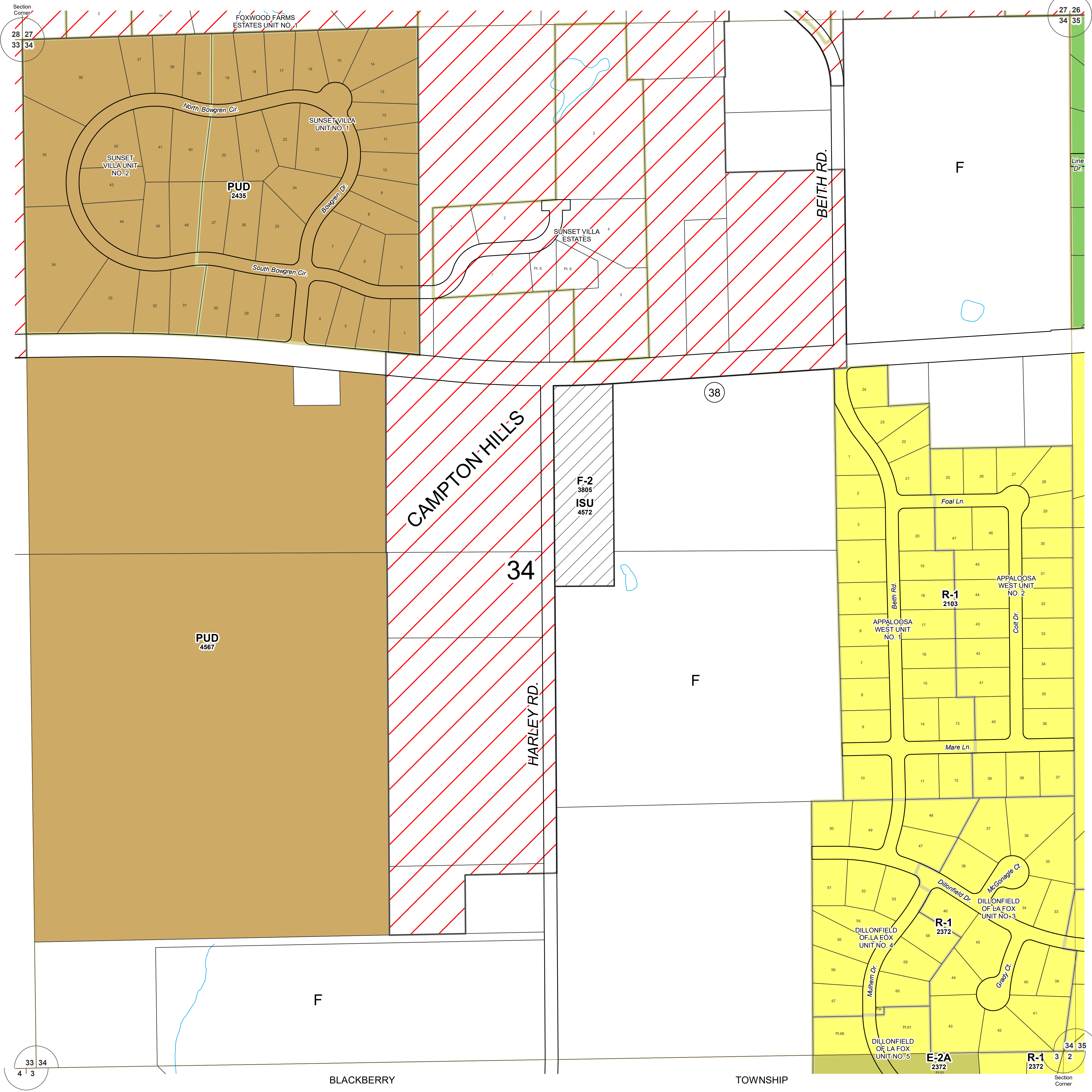
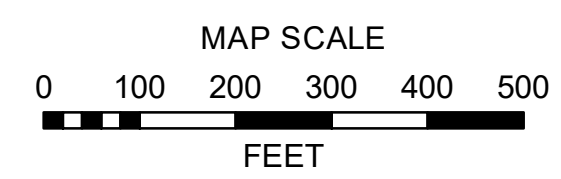


ZONING MAPS
of
KANE COUNTY, ILLINOIS

MAP NO. CA-34



SECTION 34
CAMPION TOWNSHIP

BLACKBERRY

TOWNSHIP

Revisions

8/04 - TJM	
2/21 - TJM	
6/21 - TJM	

Digital Zoning Maps created September 9, 2003 (TJM, TJM)

Base data current as of May 31, 2021.

CA-34 ZONING

Kane County, Illinois
Building and Zoning Division

Mark D. Vankerhoff, AIA
Zoning Enforcing Officer

Kane County
Government Center
719 S. Batavia Ave.
Bldg. A, 4th Floor
Geneva, IL 60134

Phone: 630.232.3492

ZONING LEGEND

FARMING DISTRICT	F	[White]
	F-1	[Light Gray]
	F-2	[Diagonal Lines]
RESIDENTIAL DISTRICT	E-1	[Light Green]
	E-2	[Medium Green]
	E-2A	[Light Yellow-Green]
	E-3	[Medium Green]
	R-1	[Light Yellow]
	R-2	[Light Orange]
	R-3	[Orange]
	R-4	[Dark Orange]
	R-5	[Red-Orange]
R-6	[Red]	
R-7	[Red]	
R-8	[Red]	
R-9	[Dark Orange]	
BUSINESS DISTRICT	RB	[Light Blue]
	B-1	[Light Blue]
	B-2	[Medium Blue]
	B-3	[Teal]
	B-4	[Dark Blue]
	B-5	[Dark Blue]
B-6	[Dark Blue]	
SPECIAL INDUSTRIAL DISTRICT	LI	[Pink]
	I	[Purple]
SPECIAL DISTRICT	PUD	[Brown]
AIRPORT DISTRICT	A-1	[Light Green]
	A-2	[Light Green]
OTHER	SU	[Diagonal Lines]
	Incorporated	[Red Diagonal Lines]
	Forest Preserve	[Dark Green]