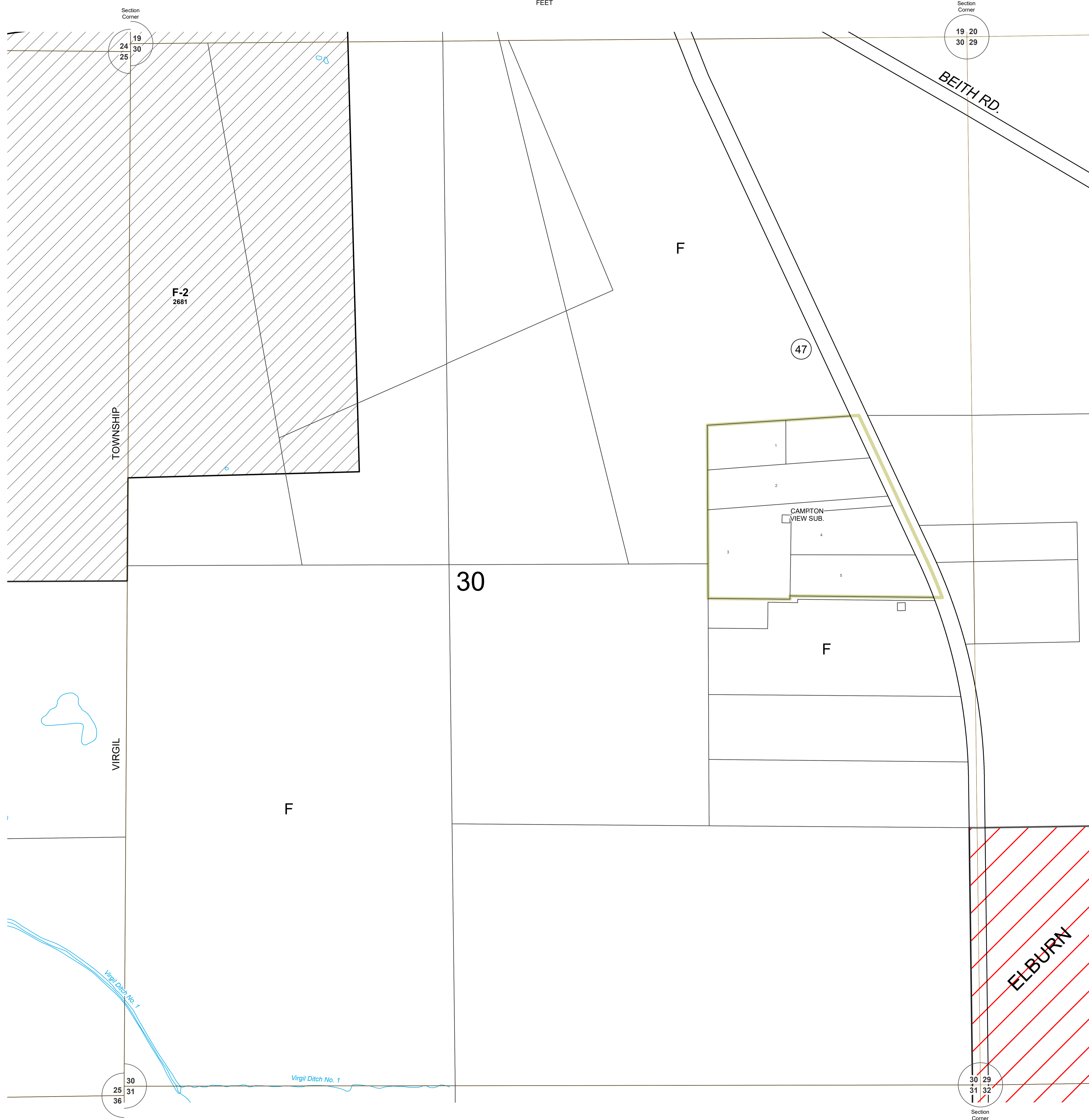
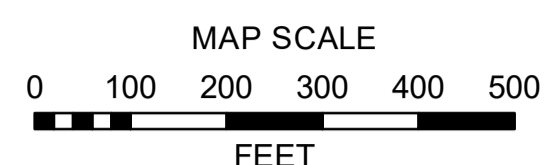
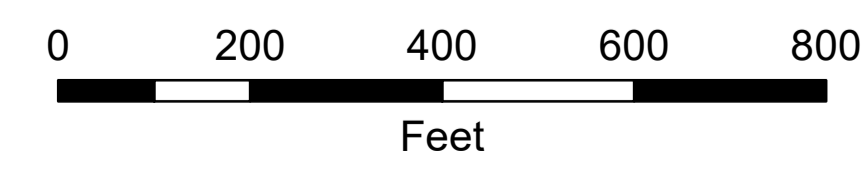


ZONING MAPS
of
KANE COUNTY, ILLINOIS

MAP NO. CA-30



SECTION 30
CAMPION TOWNSHIP



Revisions	

Digital Zoning Maps created September 9, 2003 (TMV, TJM)
Base data current as of November 30, 2020.

CA-30 ZONING

Kane County, Illinois
Building and Zoning Division

Mark D. Vankerkhoff, AIA
Zoning Enforcing Officer

Kane County
Government Center
719 S. Batavia Ave.
Bldg. A, 4th Floor
Geneva, IL 60134

Phone: 630.232.3492

ZONING LEGEND

FARMING DISTRICT	F	
	F-1	
	F-2	
RESIDENTIAL DISTRICT	E-1	
	E-2	
	E-2A	
	E-3	
	R-1	
	R-2	
	R-3	
	R-4	
	R-5	
R-6		
R-7		
R-8		
R-9		
BUSINESS DISTRICT	RB	
	B-1	
	B-2	
	B-3	
	B-4	
	B-5	
SPECIAL INDUSTRIAL DISTRICT	LI	
	I	
SPECIAL DISTRICT	PUD	
AIRPORT DISTRICT	A-1	
	A-2	
OTHER	SU	
	Incorporated	
	Forest Preserve	