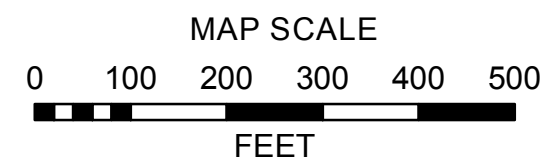


ZONING MAPS
of
KANE COUNTY, ILLINOIS

MAP NO. CA-28



Kane County, Illinois
Building and Zoning Division

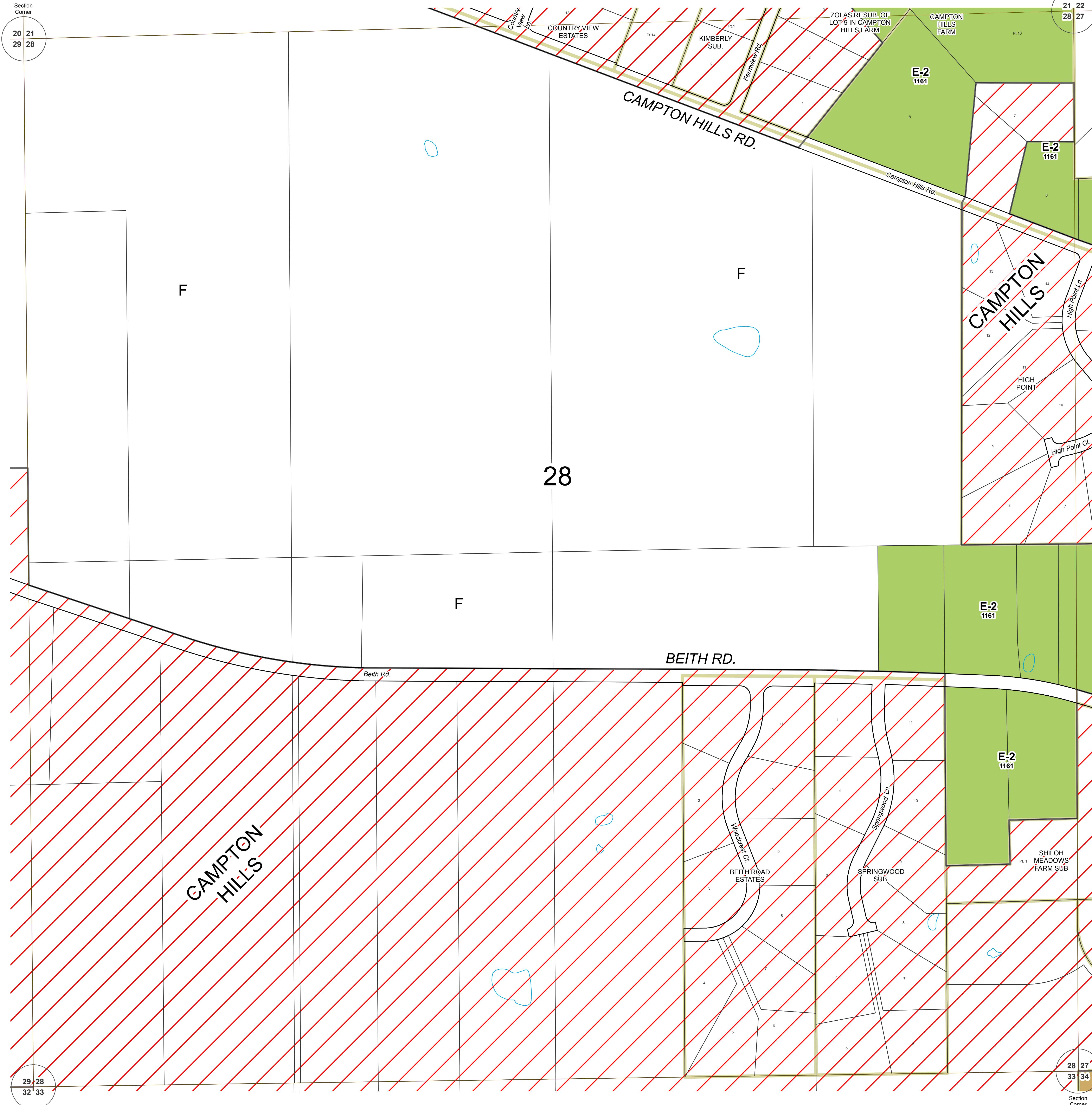
Mark D. Vankerkhoff, AIA
Zoning Enforcing Officer

Kane County
Government Center
719 S. Batavia Ave.
Bldg. A, 4th Floor
Geneva, IL 60134

Phone: 630.232.3492

Section
Corner
20 21
29 28

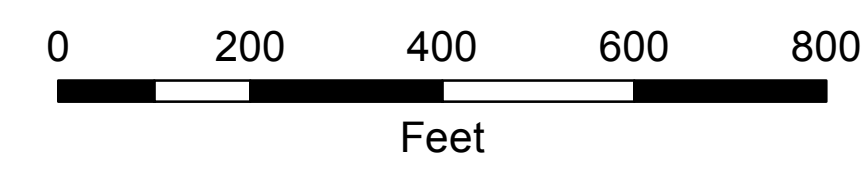
Section
Corner
21 22
28 27



Section
Corner
29 28
32 33

Section
Corner
28 27
33 34

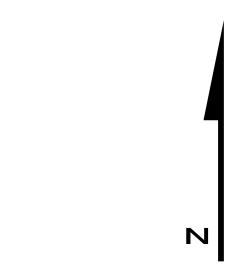
SECTION 28
CAMPTON TOWNSHIP



Revisions	
7/05 - BRB	

Digital Zoning Maps created September 9, 2003 (TMV, TJM)

Base data current as of February 28, 2019.



CA-28 ZONING

ZONING LEGEND

FARMING DISTRICT	F	
	F-1	
	F-2	
RESIDENTIAL DISTRICT	E-1	
	E-2	
	E-2A	
	E-3	
	R-1	
	R-2	
	R-3	
	R-4	
	R-5	
R-6		
R-7		
R-8		
R-9		
BUSINESS DISTRICT	RB	
	B-1	
	B-2	
	B-3	
	B-4	
	B-5	
	B-6	
SPECIAL INDUSTRIAL DISTRICT	LI	
	I	
SPECIAL DISTRICT	PUD	
AIRPORT DISTRICT	A-1	
	A-2	
OTHER	SU	
	Incorporated	
	Forest Preserve	