

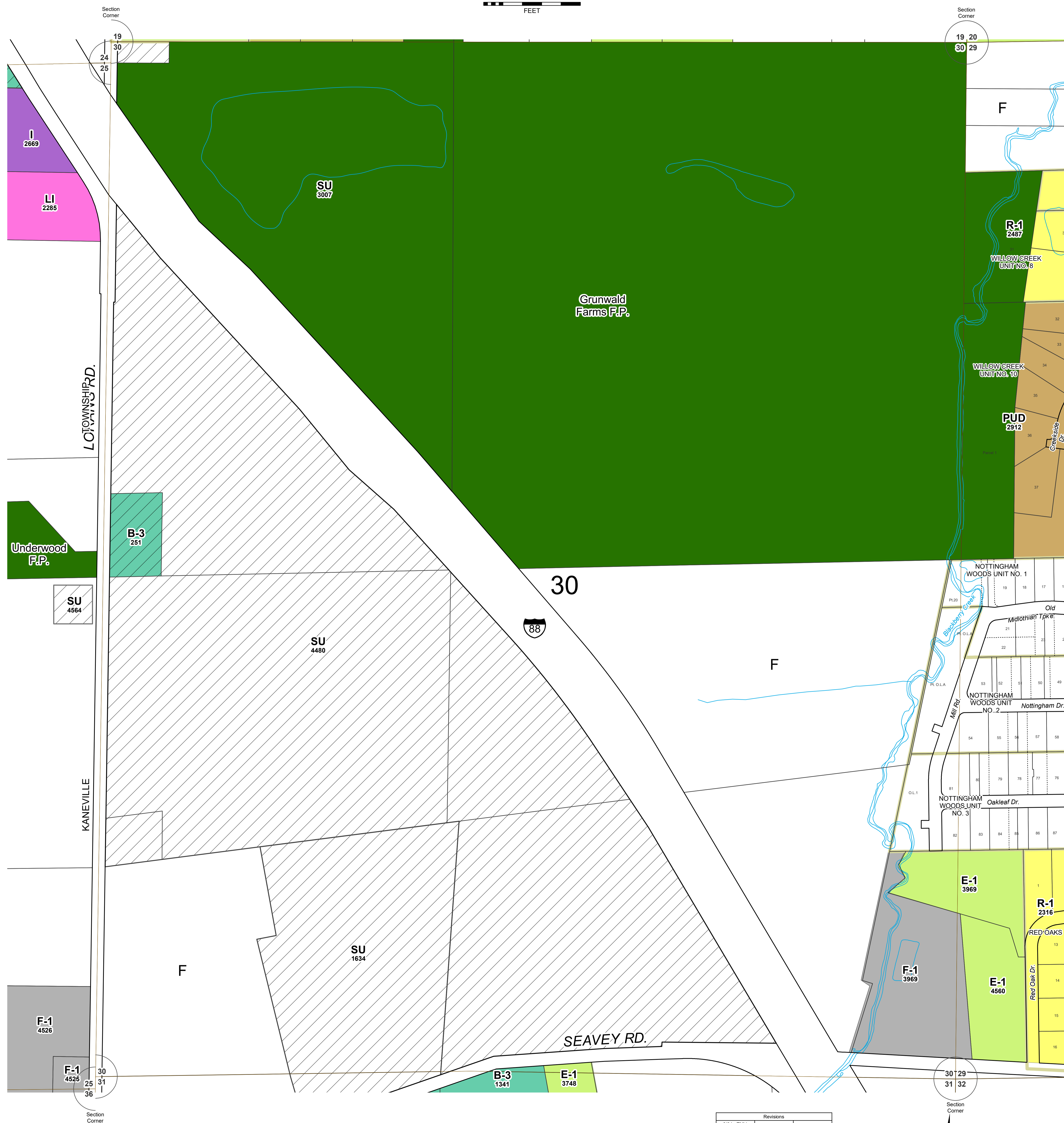
ZONING MAPS  
of  
KANE COUNTY, ILLINOIS  
MAP NO. BL-30  
MAP SCALE  
0 100 200 300 400 500  
FEET

Kane County, Illinois  
Building and Zoning Division

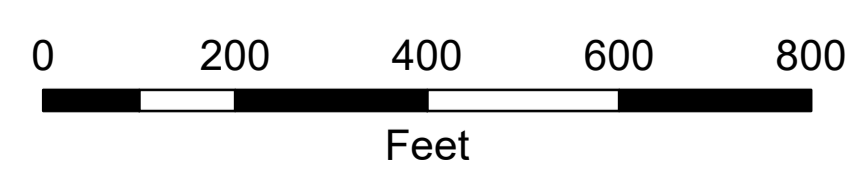
Mark D. Vankerkhoff, AIA  
Zoning Enforcing Officer

Kane County  
Government Center  
719 S. Batavia Ave.  
Bldg. A, 4th Floor  
Geneva, IL 60134

Phone: 630.232.3492



SECTION 30  
BLACKBERRY TOWNSHIP



Revisions	
3/04 - TMV	
3/19 - TJM	

Digital Zoning Maps created September 9, 2003 (TMV, TJM)  
Base data current as of February 28, 2021.

BL-30 ZONING

ZONING LEGEND

FARMING DISTRICT	F	[White]
	F-1	[Light Gray]
	F-2	[Diagonal Lines]
RESIDENTIAL DISTRICT	E-1	[Light Green]
	E-2	[Medium Green]
	E-2A	[Yellow-Green]
	E-3	[Green]
	R-1	[Yellow]
	R-2	[Light Orange]
	R-3	[Orange]
	R-4	[Dark Orange]
	R-5	[Red]
R-6		
R-7		
R-8	[Dark Red]	
R-9	[Brown]	
BUSINESS DISTRICT	RB	[Light Blue]
	B-1	[Light Blue]
	B-2	[Medium Blue]
	B-3	[Teal]
	B-4	[Dark Teal]
	B-5	[Dark Blue]
SPECIAL INDUSTRIAL DISTRICT	LI	[Pink]
	I	[Purple]
SPECIAL DISTRICT	PUD	[Brown]
AIRPORT DISTRICT	A-1	[Light Yellow]
	A-2	[Yellow]
OTHER	SU	[Diagonal Lines]
	Incorporated Forest Preserve	[Green]