

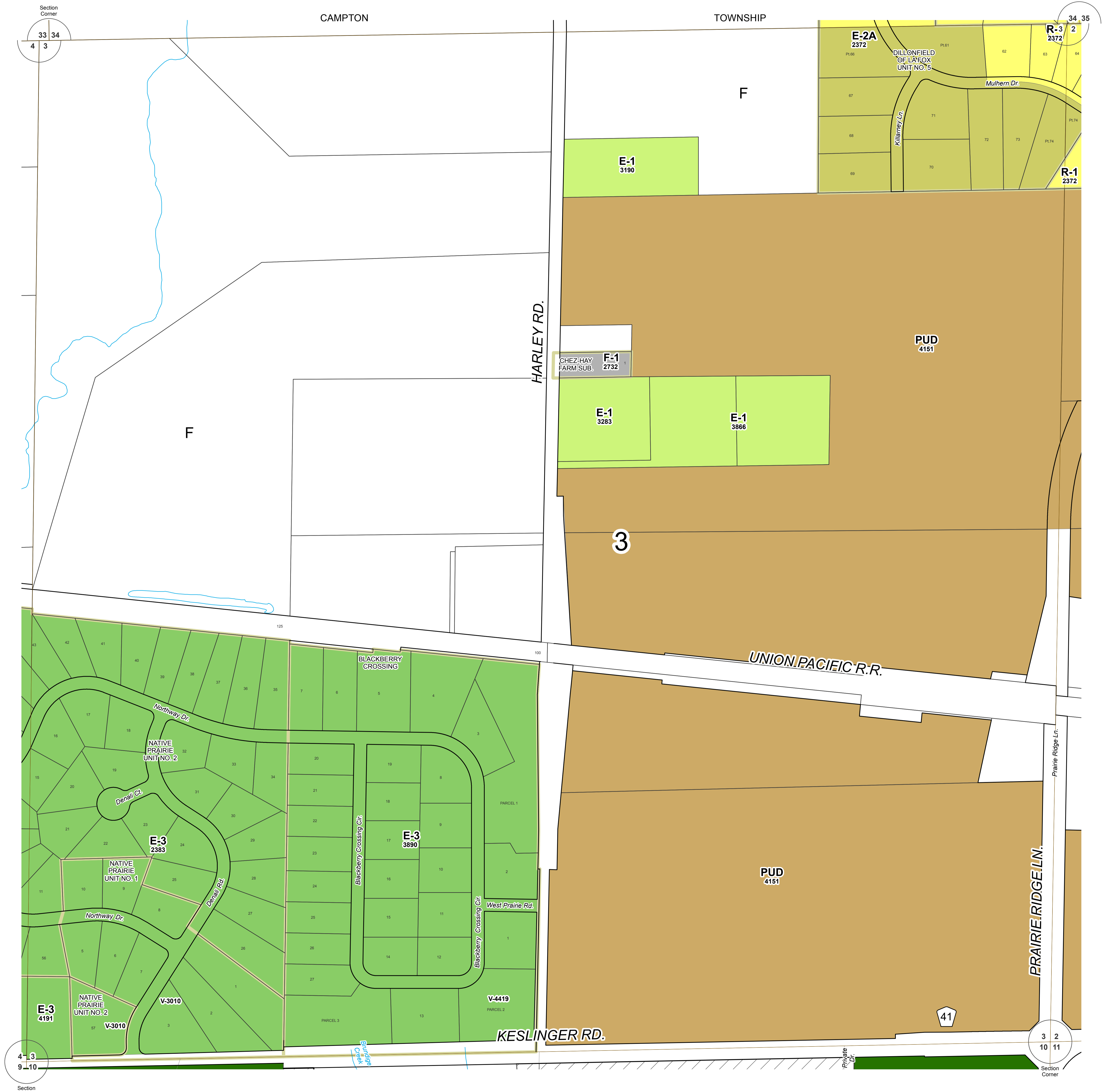
ZONING MAPS
of
KANE COUNTY, ILLINOIS
MAP NO. BL-03
MAP SCALE
0 100 200 300 400 500
FEET

Kane County, Illinois
Building and Zoning Division

Mark D. Vankerkhoff, AIA
Zoning Enforcing Officer

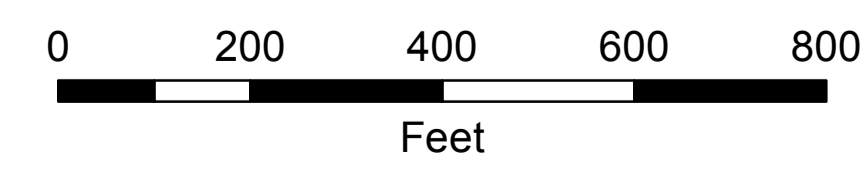
Kane County
Government Center
719 S. Batavia Ave.
Bldg. A, 4th Floor
Geneva, IL 60134

Phone: 630.232.3492



ZONING LEGEND		
FARMING DISTRICT	F	[White Box]
	F-1	[Light Gray Box]
	F-2	[Diagonal Lines Box]
RESIDENTIAL DISTRICT	E-1	[Light Green Box]
	E-2	[Medium Green Box]
	E-2A	[Light Yellow-Green Box]
	E-3	[Medium Green Box]
	R-1	[Light Yellow Box]
	R-2	[Light Orange Box]
	R-3	[Orange Box]
	R-4	[Dark Orange Box]
	R-5	[Red Box]
R-6		
R-7		
R-8	[Dark Red Box]	
R-9	[Brown Box]	
BUSINESS DISTRICT	RB	[Light Blue Box]
	B-1	[Light Blue Box]
	B-2	[Medium Blue Box]
	B-3	[Teal Box]
	B-4	[Dark Blue Box]
	B-5	[Dark Teal Box]
SPECIAL INDUSTRIAL DISTRICT	LI	[Pink Box]
	I	[Purple Box]
SPECIAL DISTRICT	PUD	[Brown Box]
		[Light Brown Box]
AIRPORT DISTRICT	A-1	[Light Green Box]
	A-2	[Light Green Box]
OTHER	SU	[Diagonal Lines Box]
	Incorporated	[Diagonal Lines Box]
	Forest Preserve	[Dark Green Box]

SECTION 3
BLACKBERRY TOWNSHIP



Revisions	
7/07 - BRB	
9/08 - BRB	
7/17 - TJM	

Digital Zoning Maps created September 9, 2003 (TJM, TJM)

Base data current as of January 31, 2019.

BL-03 ZONING