

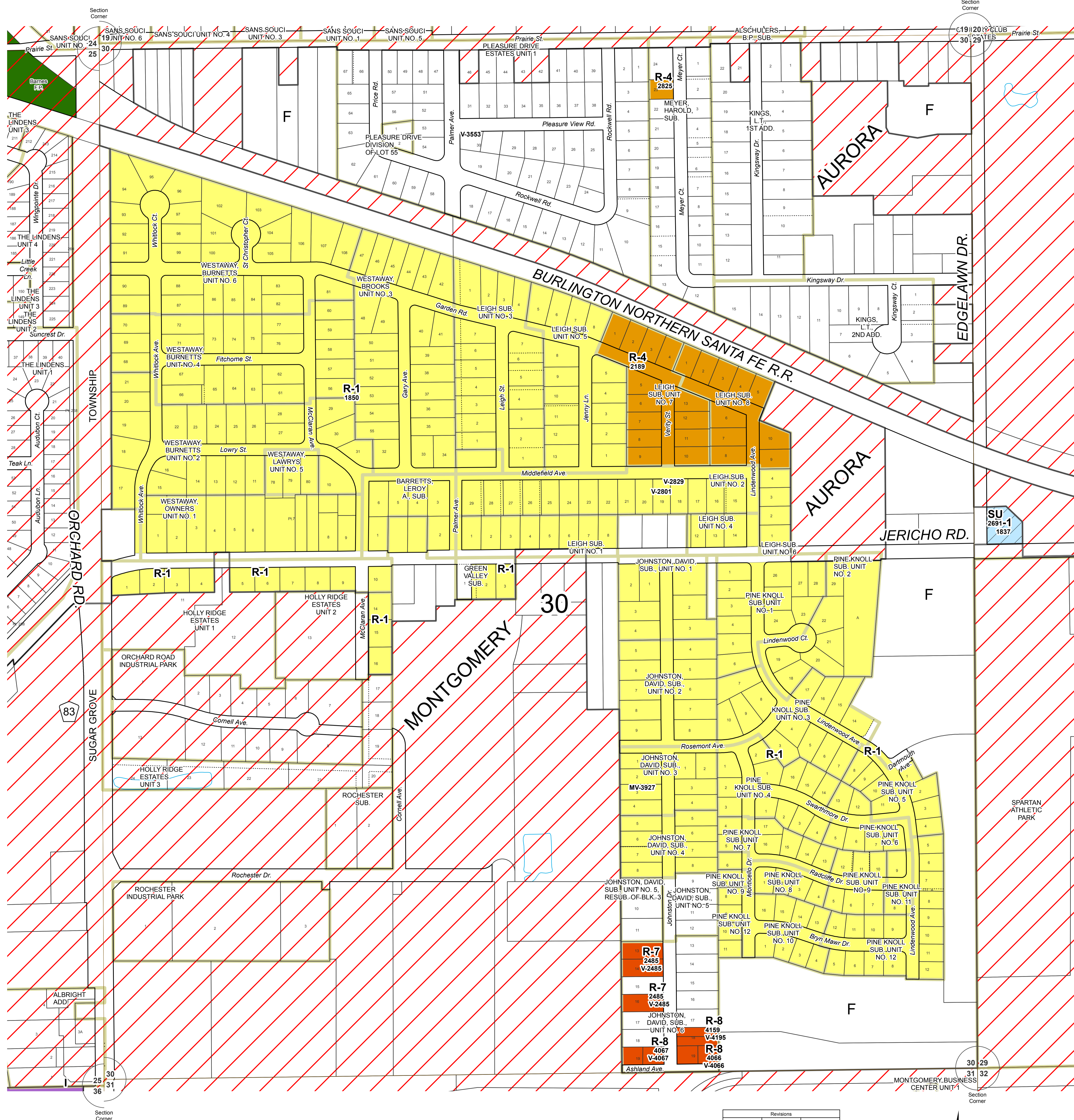
ZONING MAPS  
of  
KANE COUNTY, ILLINOIS  
MAP NO. AU-30  
MAP SCALE  
0 100 200 300 400 500  
FEET

Kane County, Illinois  
Building and Zoning Division

Mark D. Vankerkhoff, AIA  
Zoning Enforcing Officer

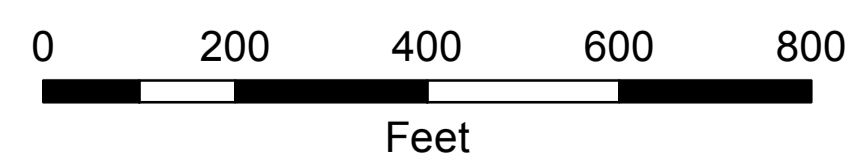
Kane County  
Government Center  
719 S. Batavia Ave.  
Bldg. A, 4th Floor  
Geneva, IL 60134

Phone: 630.232.3492



ZONING LEGEND		
FARMING DISTRICT	F	[White]
	F-1	[Light Gray]
	F-2	[Diagonal Lines]
RESIDENTIAL DISTRICT	E-1	[Light Green]
	E-2	[Medium Green]
	E-2A	[Light Yellow-Green]
	E-3	[Medium Green]
	R-1	[Light Yellow]
	R-2	[Light Orange]
	R-3	[Orange]
	R-4	[Dark Orange]
	R-5	[Dark Orange]
R-6	[Dark Orange]	
R-7	[Dark Orange]	
R-8	[Dark Orange]	
R-9	[Dark Orange]	
BUSINESS DISTRICT	RB	[Light Blue]
	B-1	[Light Blue]
	B-2	[Light Blue]
	B-3	[Light Green]
	B-4	[Light Blue]
	B-5	[Light Green]
SPECIAL INDUSTRIAL DISTRICT	LI	[Pink]
	I	[Purple]
	PUD	[Light Brown]
AIRPORT DISTRICT	A-1	[Light Green]
	A-2	[Light Green]
OTHER	SU	[Diagonal Lines]
	Incorporated	[Diagonal Lines]
	Forest Preserve	[Green]

SECTION 30  
AURORA TOWNSHIP



Revisions	
10/05 - BRB	
8/07 - BRB	

Digital Zoning Maps created September 9, 2003 (TMV, TJM)

Base data current as of March 31, 2019.

AU-30 ZONING