

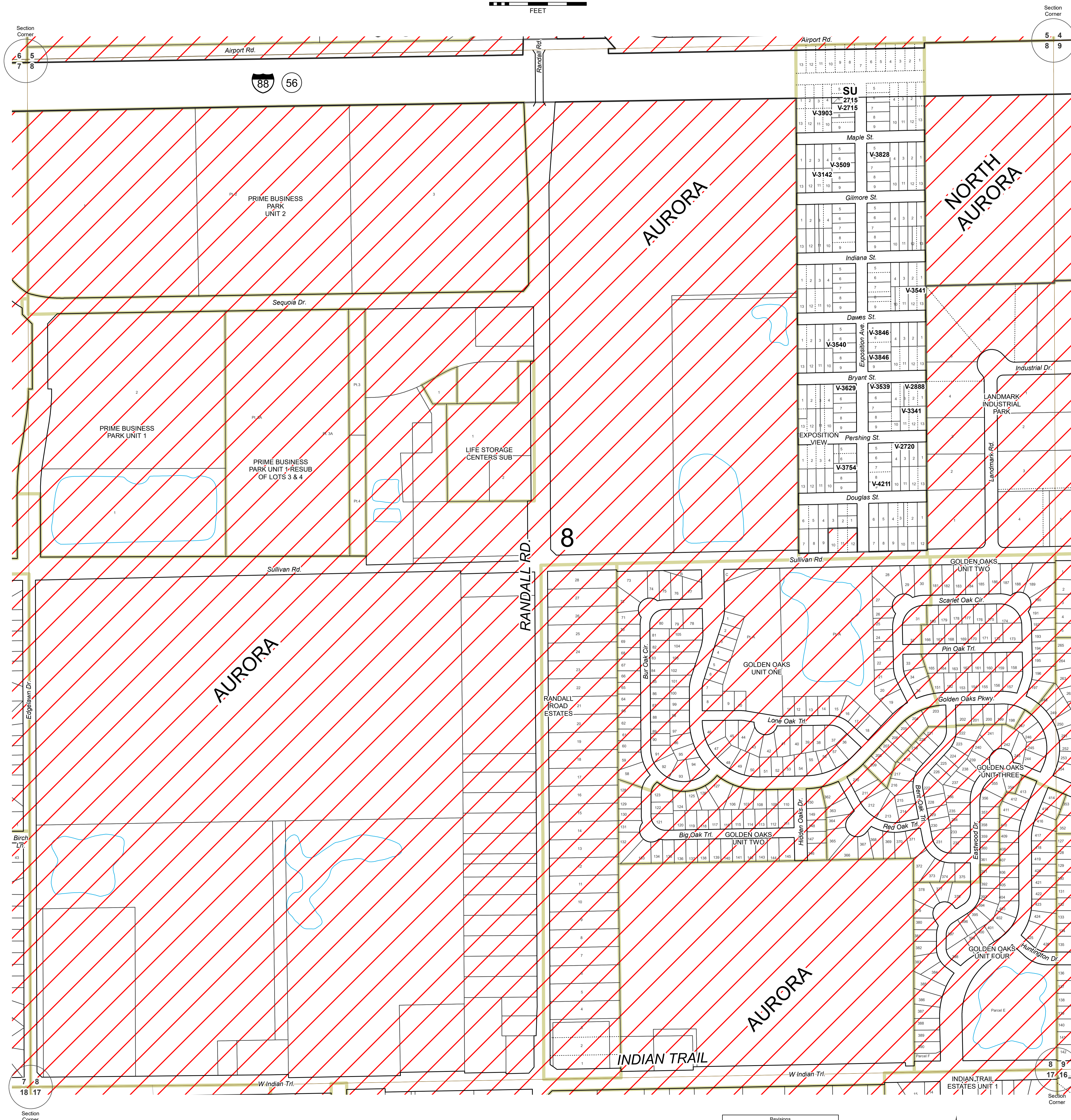
ZONING MAPS  
of  
KANE COUNTY, ILLINOIS  
MAP NO. AU-08  
MAP SCALE  
0 100 200 300 400 500  
FEET

Kane County, Illinois  
Building and Zoning Division

Mark D. Vankerkhoff, AIA  
Zoning Enforcing Officer

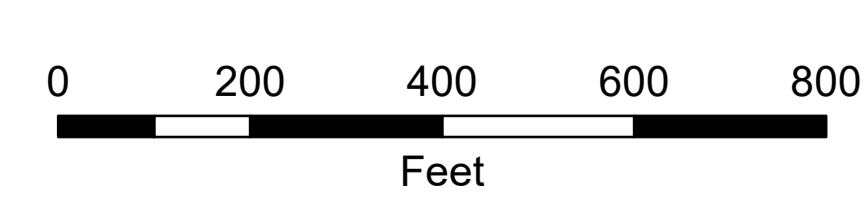
Kane County  
Government Center  
719 S. Batavia Ave.  
Bldg. A, 4th Floor  
Geneva, IL 60134

Phone: 630.232.3492



ZONING LEGEND		
FARMING DISTRICT	F	[White]
	F-1	[Light Gray]
	F-2	[Diagonal Lines]
RESIDENTIAL DISTRICT	E-1	[Light Green]
	E-2	[Medium Green]
	E-2A	[Yellow-Green]
	E-3	[Green]
	R-1	[Yellow]
	R-2	[Light Orange]
	R-3	[Orange]
	R-4	[Dark Orange]
	R-5	[Red-Orange]
R-6	[Red]	
R-7	[Dark Red]	
R-8	[Brown-Red]	
R-9	[Brown]	
BUSINESS DISTRICT	RB	[Light Blue]
	B-1	[Light Blue]
	B-2	[Medium Blue]
	B-3	[Dark Blue]
	B-4	[Teal]
	B-5	[Dark Teal]
SPECIAL INDUSTRIAL DISTRICT	LI	[Pink]
	I	[Purple]
AIRPORT DISTRICT	PUD	[Light Brown]
	A-1	[Light Green]
OTHER	A-2	[Light Green]
	SU	[Diagonal Lines]
	Incorporated	[Red Diagonal Lines]
	Forest Preserve	[Dark Green]

SECTION 8  
AURORA TOWNSHIP



Revisions
5/09 - BRB

Digital Zoning Maps created September 9, 2003 (TMV, TJM)

Base data current as of December 31, 2020.

AU-08 ZONING