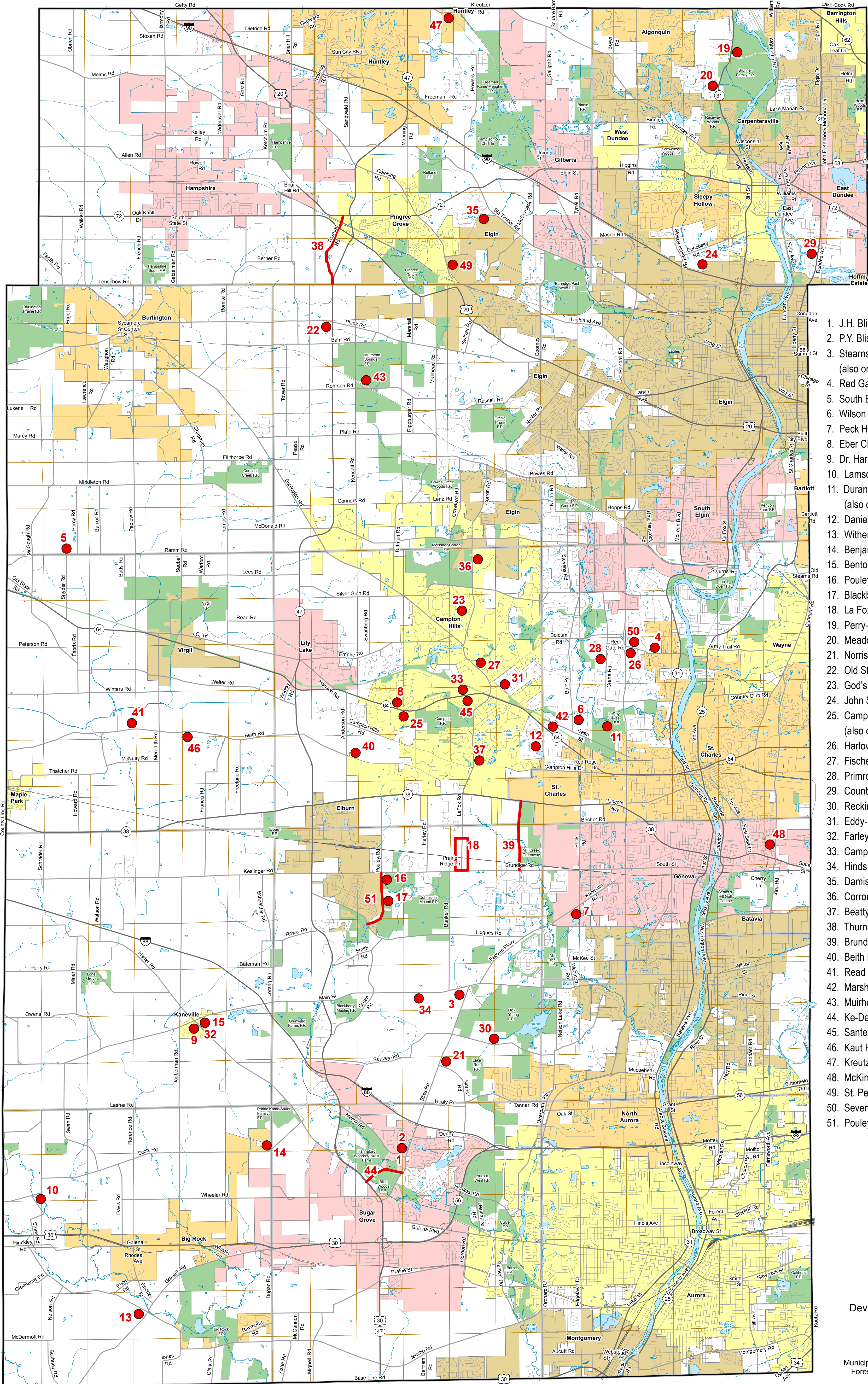



# THE KANE COUNTY REGISTER OF HISTORIC PLACES (1988 - 2019)



1. J.H. Bliss Homestead
2. P.Y. Bliss Homestead
3. Stearns-Wadsworth House (also on National Register)
4. Red Gate Farm
5. South Burlington Community House
6. Wilson Homestead
7. Peck Homestead
8. Eber Chaffee Farmstead
9. Dr. Hardy's Office
10. Lamson Homestead
11. Durant-Peterson House (also on National Register)
12. Daniel Lincoln Homestead
13. Withered Oaks
14. Benjamin George House
15. Benton Homestead
16. Pouley Estate
17. Blackberry Creek Farm
18. La Fox Historic District
19. Perry-Lathrop Homestead
20. Meadowdale Country School
21. Norris House
22. Old St. Peter's Church Building
23. God's Little Acre Cemetary
24. John Schmidtke House
25. Campton Town Hall (also on National Register)
26. Harlow Hooker Homestead
27. Fischer Homestead
28. Primrose Farm
29. Country Tea Room
30. Reckinger Farm
31. Eddy-Swanson Farmstead
32. Farley House
33. Campton Community Center
34. Hinds Farmstead
35. Damisch Farmstead
36. Corron Farm
37. Beatty Homestead - Mongerson Farm
38. Thurnau Road (Rustic Road)
39. Brundige Road (Rustic Road)
40. Beith House
41. Read House
42. Marshall House
43. Muirhead Farmhouse
44. Ke-De-Ka Road (Rustic Road)
45. Santell Prairie Home
46. Kaut House
47. Kreutzer House
48. McKinley-Adams House
49. St. Peter's Evangelical Lutheran Church
50. Seven Oaks Farm
51. Pouley Road (Rustic Road)

  
 1 inch = 1 mile  
 Kane County  
 Development and Community  
 Services Department  
 TJM - 1/19

Municipal Boundaries current thru 12-31-18.  
Forest Preserves current thru 12-31-18.